

# League of Women Voters of Pullman Observer Report

Name of Agency: Pullman School District Date: 13 December 2023  
 Observer Reporting: Ndambuki Length of Meeting: 2 hours 4 minutes  
 Members Present: Nathan Roberts, Arron Carter, Amanda Tanner, Lisa Waananen Jones, Craig Nelson

Other District Personnel Present: Joe Thornton, Diane Hodge, Roberta Kramer, Bob Maxwell

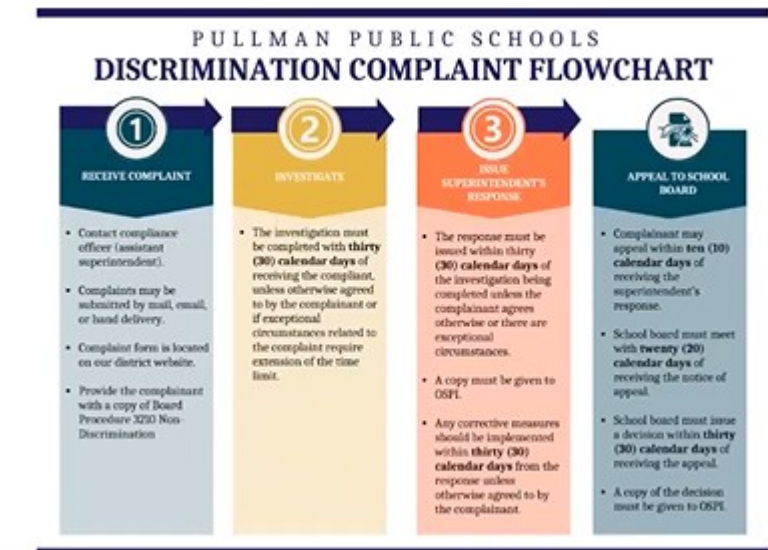
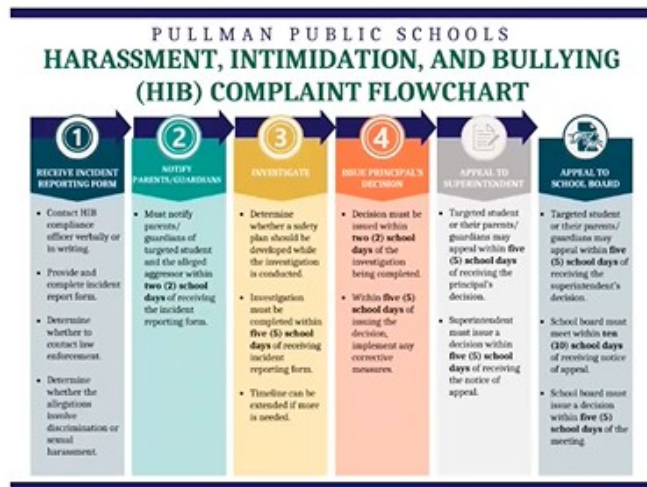
Others Present: Pam Brantner (Principal SES), Cameron Grow (Principal LMS), Mimi Dismore (Magic Club advisor), Jill Bickelhaupt (CTE Director), Taylor Roberts (Developmental Learning Center LMS)

Members Absent:

**Business pertaining to League Positions or topics of interest:** *Include in this section 1) issues discussed that relate to League priorities or positions. Do you recommend local league action? If so, please refer to the League position that supports your suggestion.*

## Quality of Instruction:

- Harassment, Intimidation, Bullying, and/or Discriminatory Incidents/Behaviors new flow-chart & messaging
  - Assisted by Dr. Sutton (WSU)



- Both processes have an appeal process
- Suggested to combine into one form because there is often overlap
- Not live yet, first draft
- Board Director Nelson asked if Board Members could have a copy of this to which the Superintendent responded yes
  - Board Director Roberts said that draft copies are usually emailed out afterward
- Also created a “checklist for administrators” (but note that available diversity training for administrators earlier this fall was not mandatory but voluntary for administrators...)

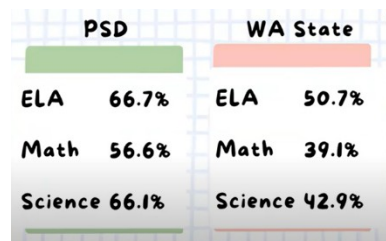
- CTE Program report (Career and Technical Education)

- Programming continues to expand and connect to postsecondary credit as well as to actionable certificates for the workplace
- All programming must be re-approved every five years and in that sense is unique in terms of course offerings in the general curriculum, making the CTE programs a model of continuous improvement
- CTE programs can fulfill graduation pathways, so they are very attractive as alternative ways of learning math, science, and leadership
- Very connected to regional, state, and national competitions and volunteering
- New STEM class (second in framework) added
- New class in Early Childhood Education
- 75% students at PHS, 40% at LMS take at least one class in CTE

- SBA (Smarter Balanced Assessment) Report

| Statistic   | North End Elementary Schools |        |  | South End Elementary Schools |           |
|---|------------------------------|--------|--|------------------------------|-----------|
|   | Jefferson                    | Kamiak |  | Franklin                     | Sunnyside |
| Students Enrolled (22-23)                             | 315                          | 373    |  | 260                          | 300       |
| Number of Classroom Teachers                          | 24                           | 31     |  | 23                           | 23        |
| Teacher/Student Ratio                                 | 13.1                         | 12.0   |  | 11.3                         | 13.0      |
| Met ELA   | 51.4%                        | 60.3%  |  | 75%                          | 68.1%     |
| Met Math  | 44.3%                        | 59.3%  |  | 75.7%                        | 68.1%     |
| Met Science   | 53.2%                        | 66.7%  |  | 83.6%                        | 65%       |
| Poverty (as measured by free & reduced lunch numbers) | 62.2%                        | 50.1%  |  | 27.5%                        | 24.3%     |

- North End averages:
  - ELA 55.85%
  - Math 51.8%
  - Science 59.95%
- South End averages:
  - ELA 71.55%
  - Math 71.9%
  - Science 74.3%



### Responsible Use of Public Funds:

- Clubs at LMS (there are many to choose from), teachers’ and other adults’ are partially compensated for their time, community members have expressed a concern about transition to middle school and transition to high school and the district has acknowledged that supporting those transitions is important in order to keep students engaged in school through a sense of fun and belonging:

- A student wrote a letter that said, "...when I first came to middle school, I was in need of a few new friends, the old friends I had were now more interested in their friends from other schools, so I was left with only a few good friends. When I first walked into *Magic, The Gathering*, I could tell that the people here were perfect friends, I grabbed the deck and started playing. I loved the game and I started to make friends with the members. If it wasn't for the Magic Club, I would not have made the same deep connections with my new friends and some of them wouldn't have become friends with me at all. It is also a place where I feel comfortable and safe."
  - Girls' Bowling
    - District funds bus transportation through LMS building budget or activity budget
    - Around 50 bowlers, divided into two groups who bowl once/week for approximately 2 months
  - Culinary Club
    - Specifically designed for the Developmental Learning Center
    - A student and a teacher presented
- Transportation Services Report
    - District running one fewer routes than last year
      - At a recent meeting with staff, parents, and community members, a parent shared that her child's route takes 1.5 hours
    - Rural routes are not strictly rural, there are some places that are in city limits but are part of a rural route
    - Youth free program with Pullman Transit for 6-12 grade students in addition to extra Yellow School bus express routes that run school to school to make connections for students to give them options
    - The substitute pool for school bus drivers continues to be a challenge
      - Several staff members have their license to drive school buses and can fill in
      - May result in rolling cancellation of routes
      - Had to cancel three events this fall because of a shortage of drivers
    - During the public comment period a speaker talked about one of her children being on the bus for 1 hour and 20 minutes each way when the year before it took that child 15 minutes on the bus to get to and from school
  - During the public comment period several speakers raised concerns about inadequate pay for several categories of employees in the district who are either not represented by a union or recently unionized and currently in bargaining with the district